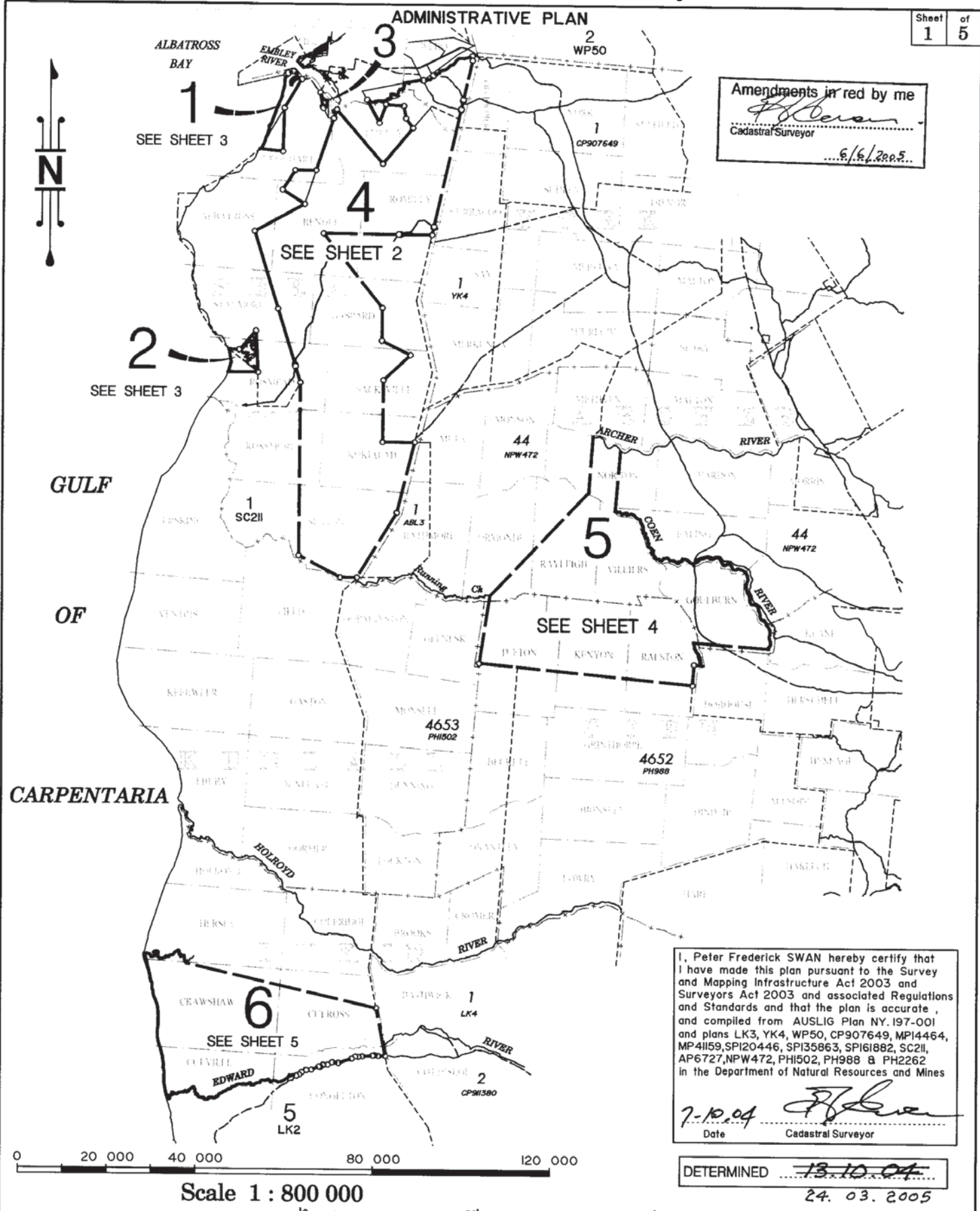


ADMINISTRATIVE PLAN

Amendments in red by me
F. Swan
 Cadastral Surveyor
 6/6/2005



I, Peter Frederick SWAN hereby certify that I have made this plan pursuant to the Survey and Mapping Infrastructure Act 2003 and Surveyors Act 2003 and associated Regulations and Standards and that the plan is accurate, and compiled from AUSLIG Plan NY.197-001 and plans LK3, YK4, WP50, CP907649, MP14464, MP41159, SPI20446, SPI35863, SPI61882, SC211, AP6727, NPW472, PH1502, PH988 & PH2262 in the Department of Natural Resources and Mines

7-10-04 *F. Swan*
 Date Cadastral Surveyor

DETERMINED 13.10.04
 24. 03. 2005

Scale 1 : 800 000

Queensland Government
 Natural Resources and Mines

Prepared by
 CABOOLTURE OFFICE
 SOUTH EAST REGION
 DEPT OF NATURAL RESOURCES AND MINES
 LEVEL 4
 33 KING STREET
 CABOOLTURE Q 4510

© The State of Queensland (Dept of Natural Resources and Mines) 2004
 Base data extracted from the Digital Cadastral Data Base on the 24. 5. 2004

Lots 1 - 6

Covering Lot 3819 on PH2262, part of Lot 1 on SC211, part of Lot 5 on LK2, part of Lot 2 on WP50, Lot 10 on WP50, Lot 11 on WP50, Lot 12 on SPI35863 and Lot 2 on SPI161882.

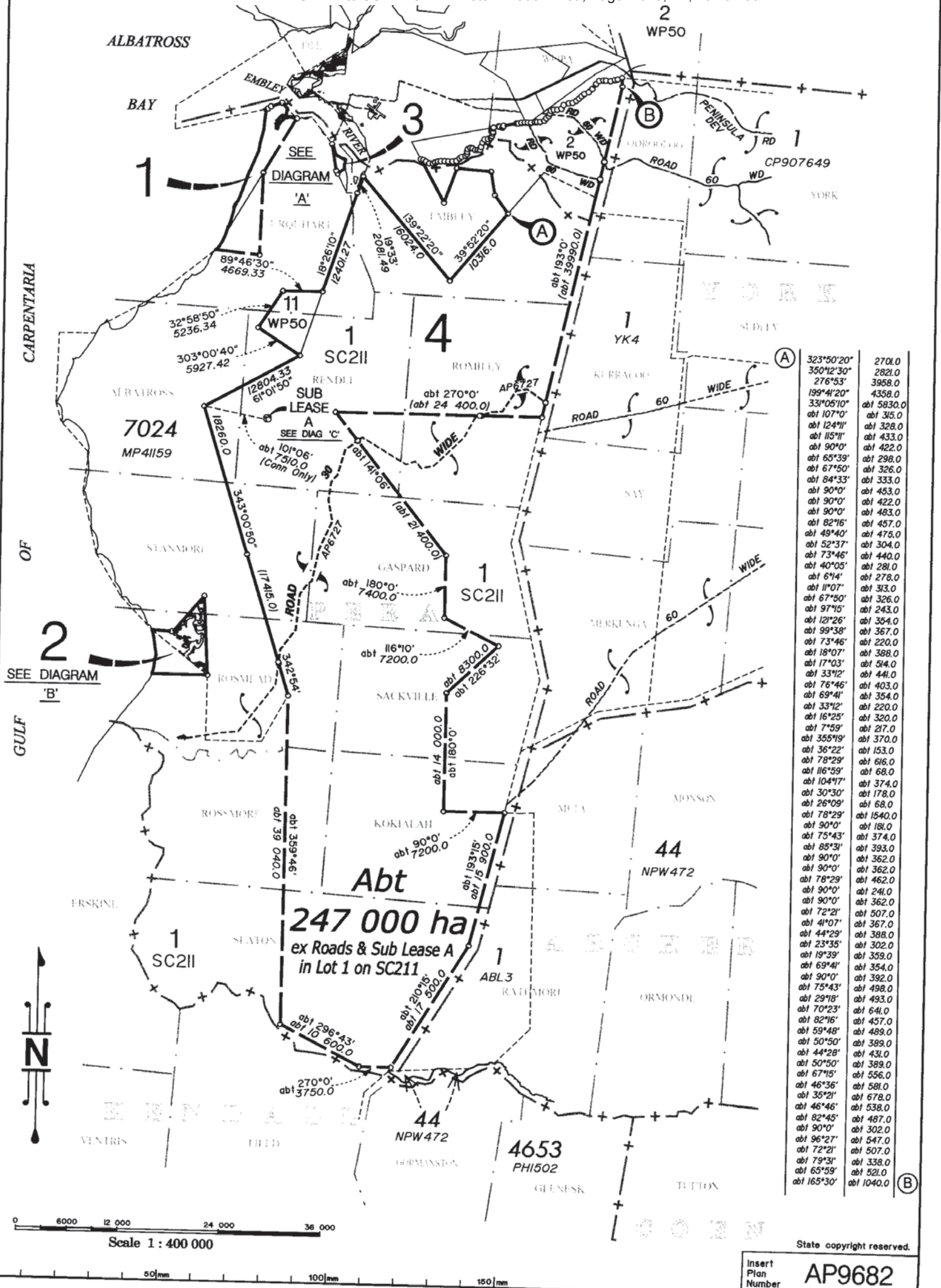
PARISH : AS SHOWN COUNTY : AS SHOWN
 AURUKUN, MISSION RIVER, AURUKUN, NAPRANUM,
 LOCALITY : PORMPURA AW, ARCHER RIVER LOCAL AUTH : PORMPURA AW, COOK

Federal Court Ref : QG6001 / 98 NNT Ref : QC94 / 03 File Ref : CAB / 002100
 Meridian : APPROX AMG (Zone 54 City of Perth) Map Ref : 7268, 7269, 7270, 7271, 7272, 7370, 7371, 7372, 7470 Drawn : 09 / 06 / 2004

NATIVE TITLE DETERMINATION PLAN

Scale: 1 : 800 000
 NOTE : A4 copy is reduced

AP9682

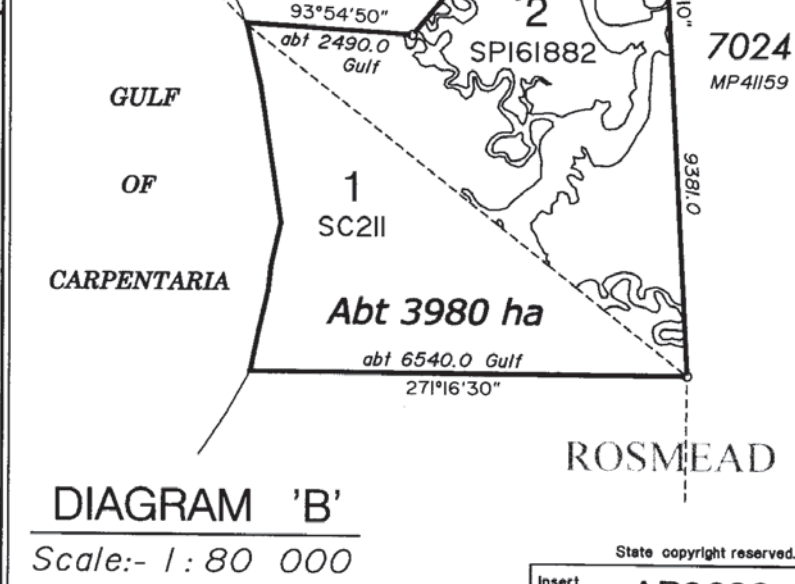
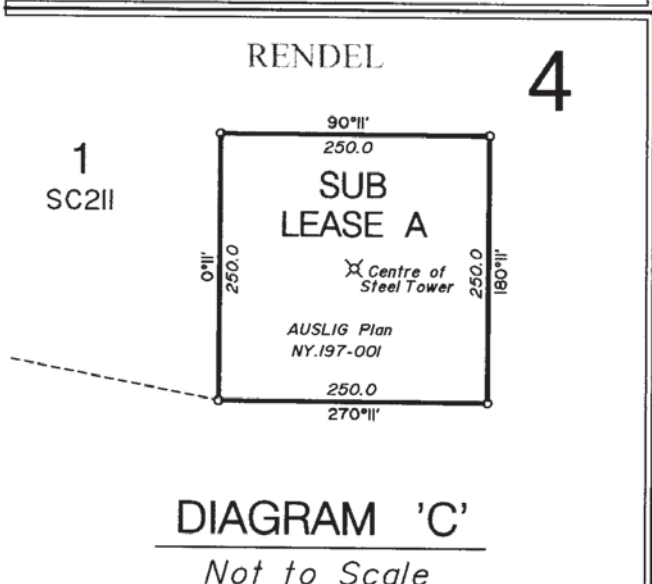
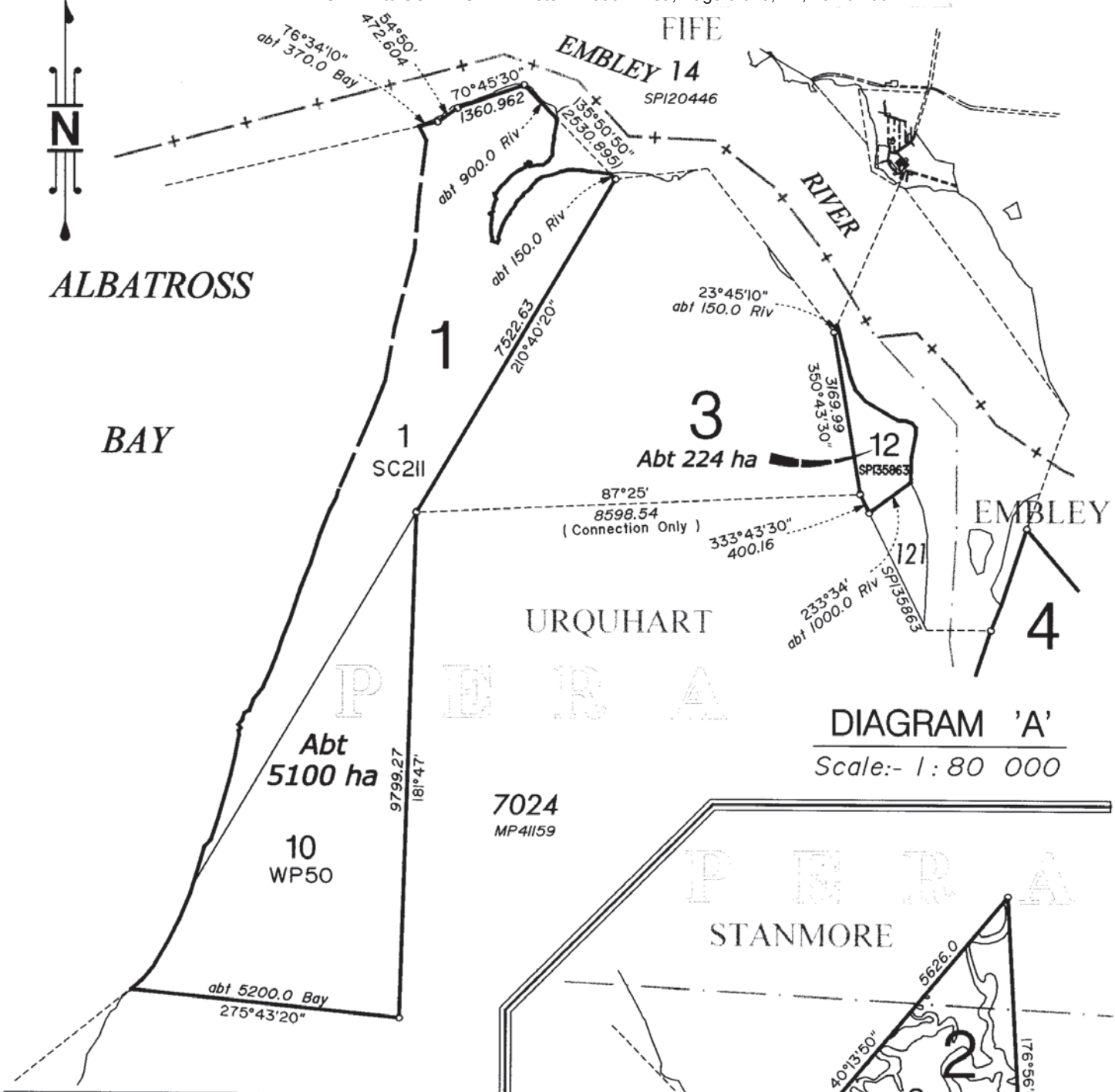


323°50'20"	270.0
350°12'30"	2021.0
276°53'	3968.0
199°4'20"	4358.0
33°05'10"	abt 5830.0
abt 107°0'	abt 315.0
abt 124°11'	abt 328.0
abt 115°11'	abt 433.0
abt 90°0'	abt 422.0
abt 65°39'	abt 298.0
abt 67°50'	abt 326.0
abt 84°33'	abt 333.0
abt 90°0'	abt 453.0
abt 90°0'	abt 422.0
abt 90°0'	abt 483.0
abt 82°16'	abt 457.0
abt 49°40'	abt 475.0
abt 52°37'	abt 304.0
abt 73°46'	abt 440.0
abt 40°05'	abt 281.0
abt 6°4'	abt 278.0
abt 11°07'	abt 313.0
abt 67°50'	abt 326.0
abt 97°15'	abt 243.0
abt 121°26'	abt 354.0
abt 99°38'	abt 367.0
abt 73°46'	abt 220.0
abt 18°07'	abt 388.0
abt 17°03'	abt 514.0
abt 33°12'	abt 441.0
abt 76°46'	abt 403.0
abt 69°41'	abt 354.0
abt 33°12'	abt 220.0
abt 16°25'	abt 320.0
abt 7°59'	abt 217.0
abt 355°19'	abt 370.0
abt 36°22'	abt 153.0
abt 78°29'	abt 616.0
abt 116°59'	abt 68.0
abt 104°17'	abt 374.0
abt 30°30'	abt 178.0
abt 26°09'	abt 68.0
abt 78°29'	abt 1540.0
abt 90°0'	abt 181.0
abt 75°43'	abt 374.0
abt 85°31'	abt 393.0
abt 90°0'	abt 362.0
abt 90°0'	abt 362.0
abt 78°29'	abt 462.0
abt 90°0'	abt 241.0
abt 90°0'	abt 362.0
abt 72°21'	abt 507.0
abt 41°07'	abt 367.0
abt 44°29'	abt 388.0
abt 23°35'	abt 302.0
abt 19°39'	abt 359.0
abt 69°41'	abt 354.0
abt 90°0'	abt 392.0
abt 75°43'	abt 498.0
abt 29°18'	abt 493.0
abt 70°23'	abt 641.0
abt 82°16'	abt 457.0
abt 59°48'	abt 489.0
abt 50°50'	abt 389.0
abt 44°28'	abt 431.0
abt 50°50'	abt 389.0
abt 67°15'	abt 556.0
abt 46°36'	abt 581.0
abt 35°21'	abt 678.0
abt 46°46'	abt 538.0
abt 82°45'	abt 487.0
abt 90°0'	abt 302.0
abt 96°27'	abt 547.0
abt 72°21'	abt 507.0
abt 79°31'	abt 338.0
abt 65°59'	abt 521.0
abt 165°30'	abt 1040.0

0 6000 12 000 24 000 36 000
 Scale 1 : 400 000

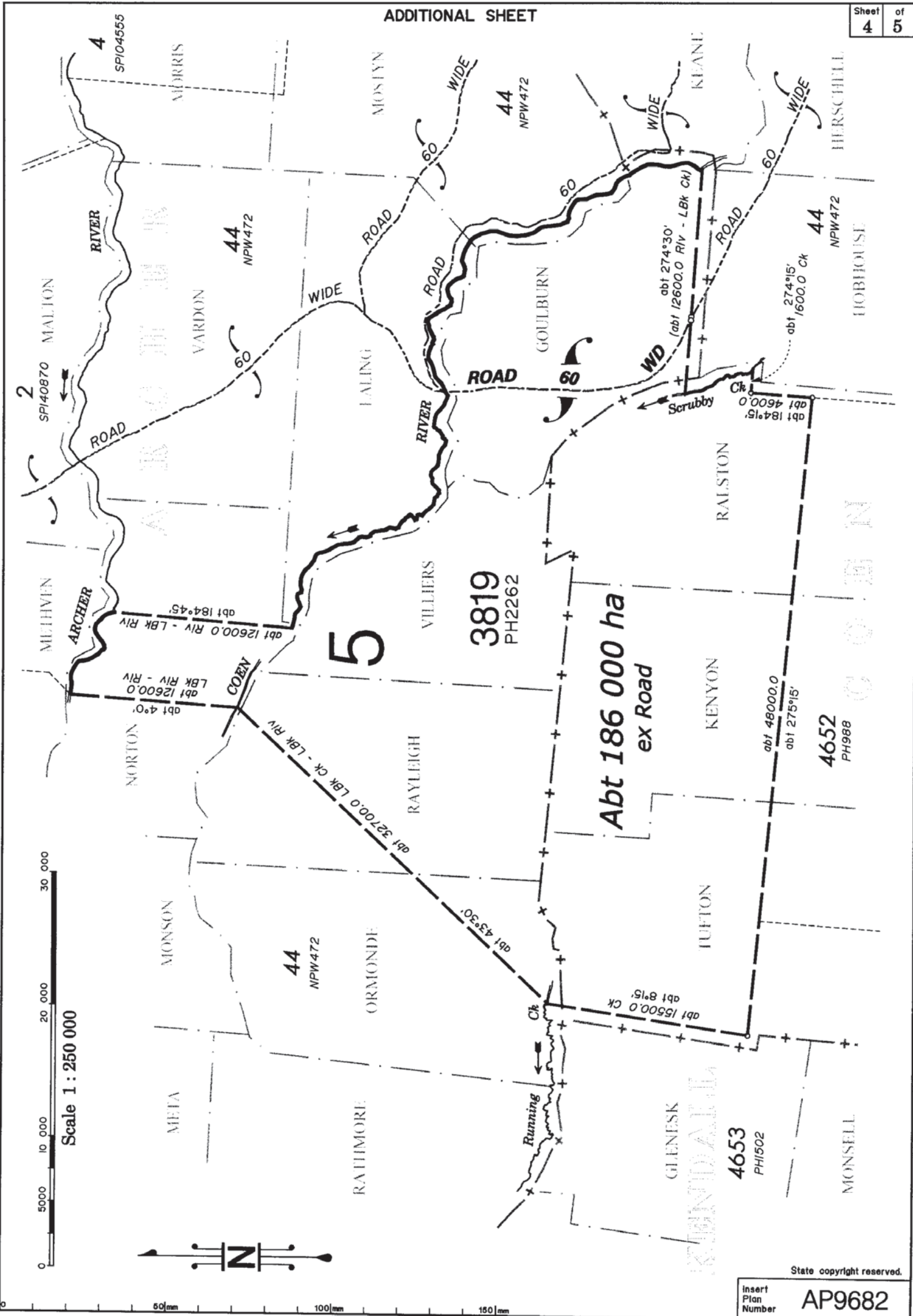
State copyright reserved.

Insert Plan Number **AP9682**



ADDITIONAL SHEET

Sheet 4 of 5



State copyright reserved.

Insert Plan Number

AP9682

ADDITIONAL SHEET

